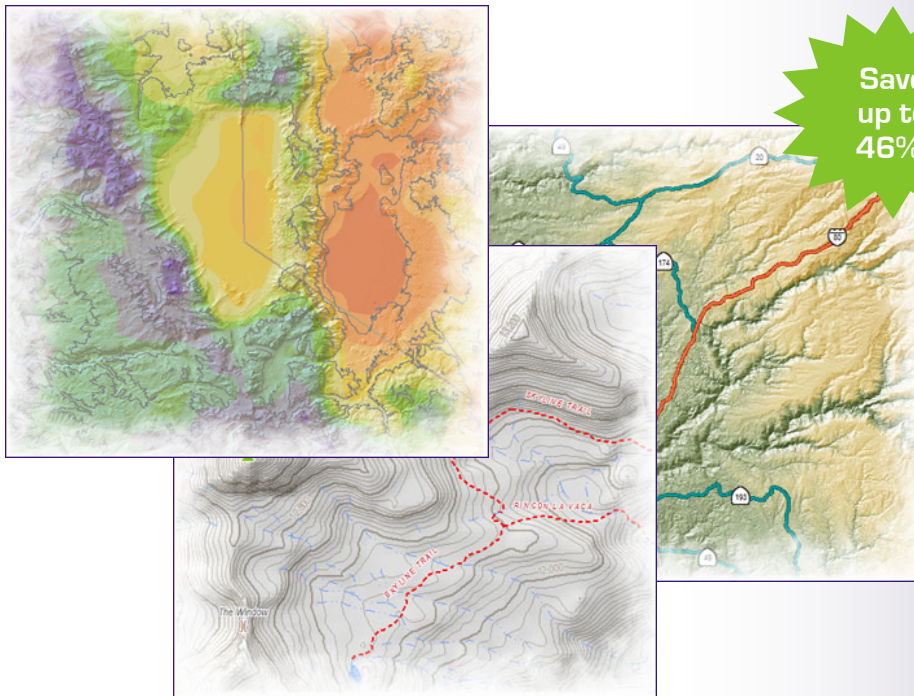


amLibrary

Apogee Mapping is pleased to offer amLibrary exclusively to educational institutions. This new data bundle consists of four comprehensive geospatial products plus 50 unique data layers for use within Geographic Information Systems (GIS).

Including elements such as terrain information, geologic features, historic natural disaster information, climate data, hydrography, federally owned lands, and environmental hazards, amLibrary provides users with a comprehensive set of map data that provides a real-world view of the landscape and natural environment.



Save up to 46%!

amLibrary can be used in support of these disciplines and more:

- Geography
- Geographic Information Systems (GIS)
- Geology
- Biology
- Nursing / Medicine
- Banking & Finance
- Business
- Marketing
- Criminal Justice
- Environmental Studies
- Archaeology
- Anthropology
- Transportation Planning
- Social Sciences
- Arts & Humanity
- Linguistics
- Ethnic Studies
- Psychology
- Computer Sciences
- Physics & Astronomy
- Education
- Political Science
- History
- Engineering

amLibrary is ideal for students and staff alike, allowing for a wide range of applications. Students will have the ability to create maps and perform analyses in support of research and theses; instructors will benefit from the ability to add visual interest in the form of maps and charts to lectures and presentations; research assistants can perform complex location-based studies to determine things such as distribution of flora and fauna, the risk of seismic or landslide activity at a proposed development site, or even linkage between a population base and incidences of crime or disease. Because location is often an important factor in support of various theories or curriculum, the amLibrary collection is a valuable data resource to any course of study. Creativity is the only limitation.

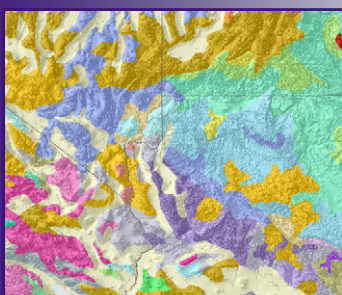
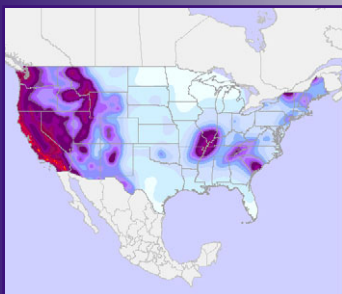
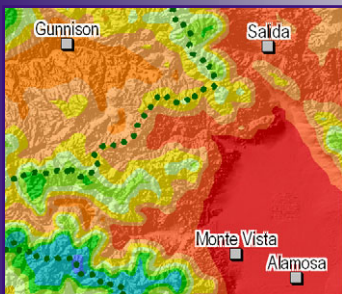
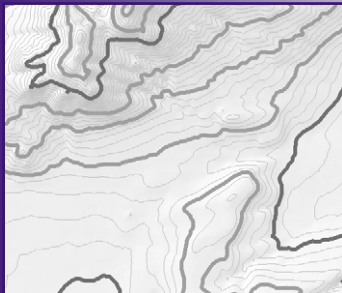
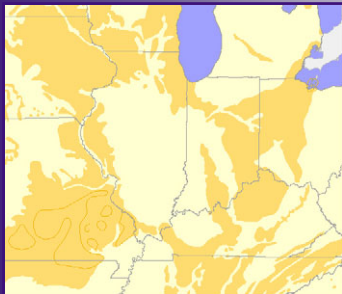
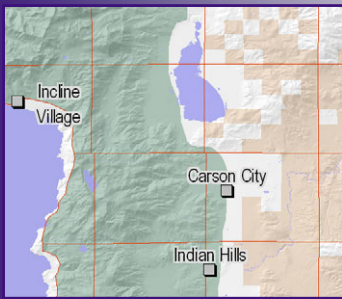
Priced from \$12,000.00 to \$18,000.00 for an educational site license* for the United States, this data set is a great value, specifically when compared to other commercial products currently on the market. This discount — a 19% to 46% savings off list price — is only being offered to educational institutions. Call Apogee Mapping today to learn more about amLibrary and learn how it can be of service to your institution!

**pricing is based on the most current available total enrollment figures as reported to the Federal government.*



35823 Road J.9, Mancos, CO 81328
PHONE: 970-565-9241 FAX: 970-565-9268
www.apogeemapping.com / info@apogeemapping.com





amLibrary is a collection of four valuable spatial data products, plus 50 individual data layers representing physical geography, climate, and environmental information. All of this data is delivered together on an external hard-drive and is available in both ESRI Shapefile format and MapInfo .TAB format. Full product documentation, including layer descriptions and metadata is provided. You will get the following individual layers and products:

Included Data Layers

The following geophysical, environmental and climactic layers of information are included with amLibrary. Apogee Mapping has collected this unique data from a wide range of government sources, then organized and converted this information into a user-friendly and standardized structure for use within popular Geographic Information Systems (GIS). The depth and variety of these data layers make them useful for a variety of disciplines and provide users with a comprehensive set of base data upon which to do further location-based analysis.

- Principal Aquifers
- Bathymetry
- Calderas
- City Climate Data
- Climate Divisions
- Coal Fields
- Continental Divide
- Bailey's Ecoregions
- EPA Ecoregions
- EPA Brownfields
- EPA Air Discharge Facilities
- EPA National Priorities List
- EPA Performance Track Facilities
- EPA Permit Compliance Facilities
- EPA RCRA Facilities
- EPA Toxic Release Inventory
- Historic Earthquakes
- Federally Owned & Administered Lands
- Fire Departments
- Generalized Faults
- Hailstorm Events
- Windstorm Events
- Quaternary Faults
- Quaternary Fault Regions
- National Forest Boundaries & Ranger Districts
- Geologic Units
- Geographic Points
- Glacial Limits
- Hurricane Tracks
- Impact Sites
- Karst & Pseudokarst Zones
- Karst Subsidence Zones
- Landfills
- Landslide Incidence and Susceptibility
- Metamorphic Facies
- Major Land Resource Areas
- Manmade Structures
- Natural Landmarks
- Public Land Survey System
- Populated Places
- Average Annual Precipitation
- Seismic Hazard
- Time Zones
- Tornado Points
- Tornado Tracks
- Towers
- Volcanoes
- 7.5-Minute Quadrangle Key
- County Boundaries
- State Boundaries

Included Data Products

amElevation

amElevation is Digital Elevation Model (DEM) data produced by the United States Geological Survey, and provides precise elevation information for any location in the United States. amElevation is offered at 1-Arc Second resolution.

amHillshade

amHillshade is a tiled, geo-referenced raster layer that is offered in greyscale and full color. amHillshade is ideal for map creation where terrain is necessary for analysis or navigation, and can also be used to enhance the overall appearance of any print or web-based map.

amContour

amContour is a vector dataset comprised of polylines representing select elevations across the United States. Derived from United States Geological Survey's Digital Elevation Data (DEMs), amContour includes 40-foot, 200-foot and 1,000-foot contour intervals with values provided in both meters and feet.

amWater

amWater is a national dataset comprised of naturally occurring and constructed bodies of water, including hydrologic units, lakes, ponds, rivers, streams, springs and wells, to name a few. Derived from information released by the Environmental Protection Agency (EPA), this high-resolution dataset is more accurate than any other available commercial source of water features and is well suited for geographic analysis and map-making alike.

Contact Us Today!

1-970-565-9241

www.apogeemapping.com
info@apogeemapping.com