

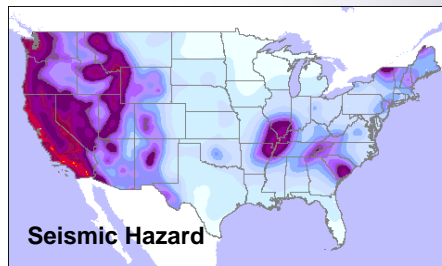
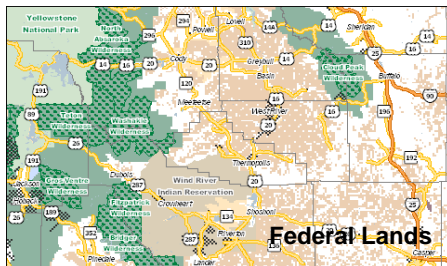
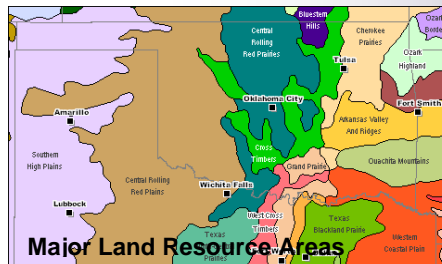
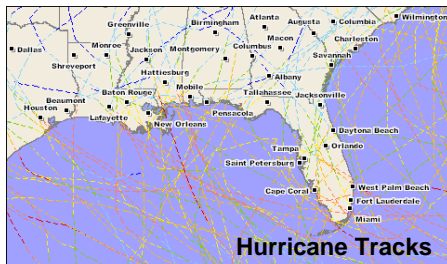
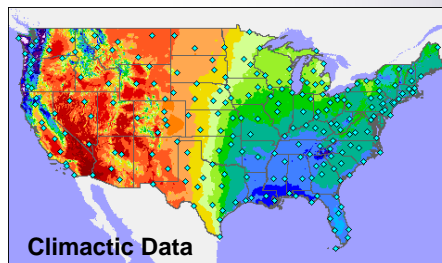
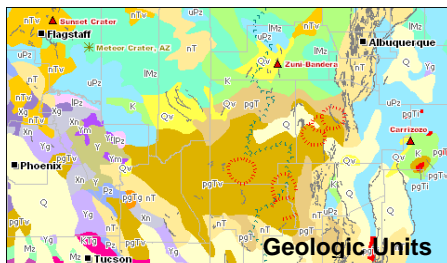
amBundle

Choose from 52 Layers!

Apogee Mapping is pleased to offer amBundle – a national spatial dataset comprised of geophysical, environmental and climactic layers of information. Apogee Mapping has collected 52 unique sources of data from a wide range of government entities and organized and converted this information into user-friendly and standardized formats for use within popular Geographic Information Systems (GIS). amBundle is the only product currently on the market offering so many earth science datasets on a single CD. Detailed metadata and source information is provided for all layers, and state and county boundaries are included for free.

Embedded colors and styles are included for certain GIS data formats; making presentation-quality maps a snap to create. amBundle is ideal for government agencies, research firms, public service and non-profit organizations, or anyone else in need of conducting location-based studies based on physical geographic information or the natural environment. When used with amStreets, organizations can get a comprehensive spatial view of the United States, making all kinds of GIS-based analysis possible.

Use amBundle layers to study natural resources, physical geography and climactic patterns.



Choose any FIVE layers for:
 Single User License = \$395.00
 Server License = \$995.00

OR

Choose ANY number of layers for:
 Single User License = \$95.00 / layer
 Server License = \$225.00 / layer

Choose any TEN layers for:
 Single User License = \$795.00
 Server License = \$1,995.00

OR

Or, Get ALL layers for:
 Single User License = \$995.00
 Server License = \$2,495.00

- Principal Aquifers
- Bathymetry
- Calderas
- City Climate Data
- Climate Divisions
- Coal Fields
- Continental Divide
- Bailey's Ecoregions
- EPA Ecoregions
- EPA Brownfields
- EPA Air Discharge Facilities
- EPA NPL Facilities
- EPA NEPT Facilities
- EPA PCS Facilities
- EPA RCRA Facilities
- EPA Toxic Release Inventory
- Historic Earthquakes
- Federally Owned and Administered Lands
- Fire Departments
- Generalized Faults
- Quaternary Faults
- Quaternary Fault Regions
- National Forest Boundaries & Ranger Districts
- Geologic Units
- Geographic Points
- Glacial Limits
- Hailstorm Events
- Hurricane Tracks
- Hydrologic Units
- Hydrologic Accounting Units
- Hydrologic Sub-Regions
- Hydrologic Regions
- Impact Sites
- Karst & Pseudokarst Regions
- Karst Subsidence Zones
- Landfills
- Landslide Incidence and Susceptibility
- Metamorphic Facies
- Major Land Resource Areas
- Manmade Structures
- Natural Landmarks
- Public Land Survey System
- Populated Places
- Average Annual Precipitation
- 7.5 Minute Quadrangle Key
- Seismic Hazard
- Time Zones
- Tornadoes (Points & Tracks)
- Towers
- Volcanoes
- Windstorm Events

Apogee Mapping is a mapping and spatial data provider with 11 years of experience in support of Geographic Information Systems (GIS) and spatial data creation. Apogee Mapping is dedicated to the development and distribution of location-based information in the form of national datasets and innovative maps that support a wide array of private business, government and public-service organizations.



35823 Road J.9, Mancos, CO 81328
 PHONE: 970-565-9241 FAX: 970-565-9268
 www.apogeemapping.com / info@apogeemapping.com